

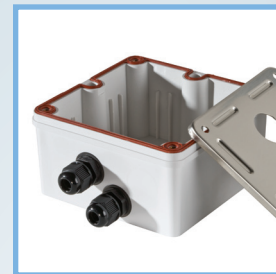
► COPPER CONNECTIVITY

Industrial Solutions



Bringing data cabling systems into your industrial space comes with a new set of challenges that must be addressed in order to ensure the reliability of your cabling and connectivity. Legrand | Ortronics provides an offering of connectivity products designed to meet the environmental challenges of industrial / lab / harsh environments as well as meeting standard data transmission requirements. The offering starts with IP67-rated Category 5e and Category 6 connectors, housings and patch cords. What is IP67? IP stands for Ingress Protection, the ability to withstand the influence of external environmental influences. The IP number is composed of 2 digits. The first digit refers to protection against solid objects (dust is an example). The larger this number is, the smaller the particle of matter has to be to penetrate the protection. A number 6 indicates "total protection against dust." The second digit describes the protection level against liquids. A number 7 indicates "protected against the effects of immersion between 15 cm and 1 meter." An IP67 rating would surpass IP66 and is an optimum rating for a factory environment where exposure to dirt, dust, other particulate, splash & wash downs is likely.

Industrial Jacks



Industrial Plates and Surface Boxes



Industrial Patch Cords

F E A T U R E D
P R O D U C T S

INDUSTRIAL JACKS, PLATES AND BOXES

Ortronics® range of Industrial Grade connectivity meets IP67 while supplying the quality cabling performance you have long associated with Ortronics. Industrial grade jacks, patch panels, and patch cords are available in Category 5e & 6 performance grades. A supporting offering of industrial grade faceplates and surface boxes include gaskets, seals and sealing plugs to support IP67 level protection through the equipment outlet. Industrial faceplates are stainless steel with gaskets. Industrial boxes utilize UL 94V0 chemically resistant plastic bases with stainless steel cover plates.

Industrial IP67 IDC Jacks

OR-IPJ6, OR-IPJ5E



PART NO.	DESCRIPTION
OR-IPJ6	Category 6 industrial jack, IP67, black with protective cover cap
OR-IPJ5E	Category 5e industrial jack, IP67, black with protective cover cap

Stainless Steel IP67 Industrial Faceplates

OR-403IPSS11

OR-403IPSS12



PART NO.	DESCRIPTION
OR-403IPSS11	Industrial stainless steel plate, 1-port single gang plate, 2.75 in x 4.5 in
OR-403IPSS12	Industrial stainless steel plate, 2-port single gang plate, 2.75 in x 4.5 in

Industrial IP67 Surface Boxes with Stainless Steel Covers

OR-404IP22

OR-404IP24



PART NO.	DESCRIPTION
OR-404IP22	2-port industrial grade box, cover and watertight cable gaskets & plugs, 5 in x 5 in
OR-404IP24	4-port industrial grade box, cover and watertight cable gaskets & plugs, 5 in x 5 in

INDUSTRIAL PATCH CORDS

Industrial Grade IP67 Patch Cords

OR-IPC610-00



PART NO.	DESCRIPTION
OR-IPC603-00	Category 6 industrial patch cord, 3 ft, black
OR-IPC605-00	Category 6 industrial patch cord, 5 ft, black
OR-IPC607-00	Category 6 industrial patch cord, 7 ft, black
OR-IPC6010-00	Category 6 industrial patch cord, 10 ft, black
OR-IPC6015-00	Category 6 industrial patch cord, 15 ft, black
OR-IPC6020-00	Category 6 industrial patch cord, 20 ft, black
OR-IPC6025-00	Category 6 industrial patch cord, 25 ft, black

PART NO.	DESCRIPTION
OR-IPC5E03-00	Category 5e industrial patch cord, 3 ft, black
OR-IPC5E05-00	Category 5e industrial patch cord, 5 ft, black
OR-IPC5E07-00	Category 5e industrial patch cord, 7 ft, black
OR-IPC5E010-00	Category 5e industrial patch cord, 10 ft, black
OR-IPC5E015-00	Category 5e industrial patch cord, 15 ft, black
OR-IPC5E020-00	Category 5e industrial patch cord, 20 ft, black
OR-IPC5E025-00	Category 5e industrial patch cord, 25 ft, black